

WiPro III *safe.lock* *Upgrade*



Installation/user manual

1. Introduction/handling

Your WiPro III is now equipped with safe.lock. The system recognizes now only original doors of the vehicle, but ignores the vehicles remote control. Thus the vehicles security gap against replay attacks is closed.

The handling of alarm system and central locking is still always possible, using the Thitronik remote control. As usual, every single keystroke switches to the next state. So both buttons can open/disarm or close/arm - like before, but additionally the central locking.

A new feature of the known handling: The small button switches without signal tone from WiPro's internal siren. The big button as always with signal tone. So passengers can leave the car without waking up the others. On demand this feature could be activated using DIP switch number 6 inside of WiPro III:

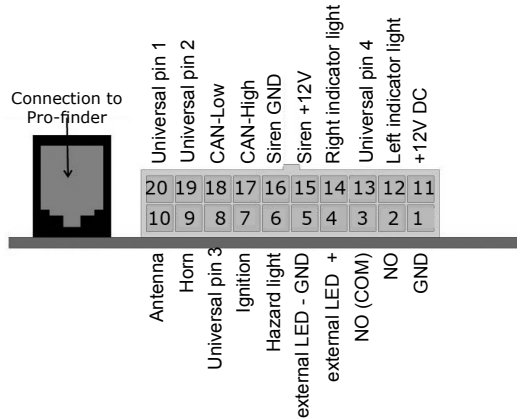
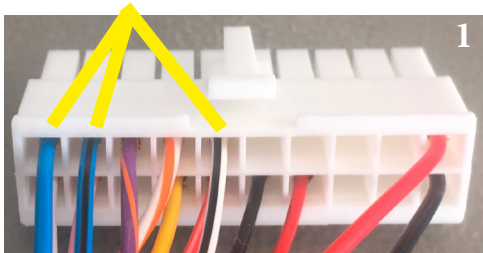
DIP 6 on	Small button switches without tone
DIP 6 off	Small button switches with tone
DIP 5 on (standard for safe.lock)	Ignoring the vehicle remote, still evaluation of CAN doors

The original vehicle key can also be equipped with an optional conversion circuit board (Art. no.: 101052), so use of the key can continue without reservation.

2. Installation

The safe.lock upgraded WiPro is able to control the central locking. Therefore three additional wires have to be integrated in the 20pin connector:

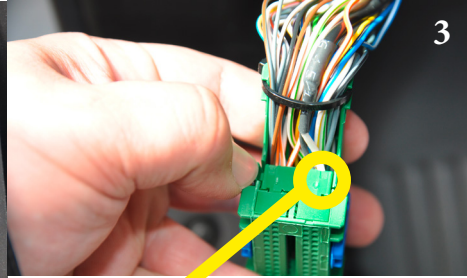
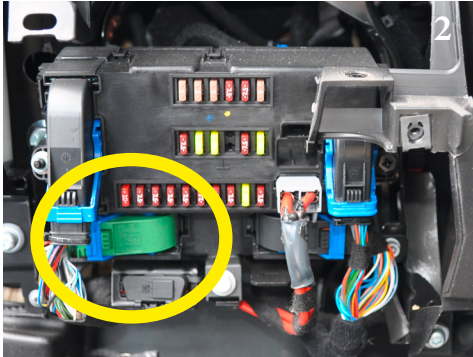
WiPro pin	Cable color
Pin 19	Blue/black
Pin 20	Blue
Pin 16	White/black(when in use connect parallel *)



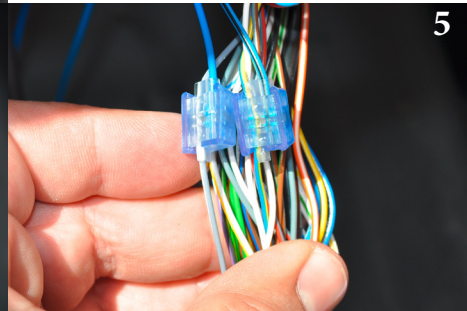
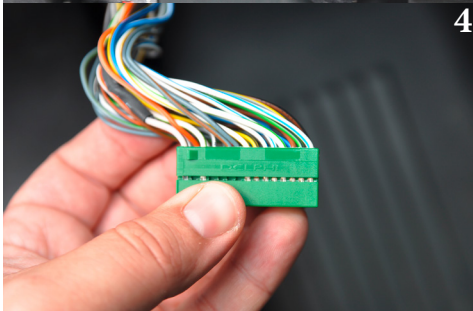
Additional to normal installation to Ducato and similar, there are two wires to be connected to the green connector of the body computer(see picture 2, yellow circle;front of the body computer/fuse box):

WiPro III safe.lock upgrade

Model year	Pin Fiat (see picture 3)	Cable color Fiat		Cable color WiPro	Function
2006-2012 (Euro4)	Pin 28	blue/yellow	→	blue/black	Central locking front
	Pin 50	pink/violet	→	blue	Central locking rear (if existing)
2012+	Pin 53	yellow/blue	→	blue/black	Central locking front
	Pin 27	grey/white	→	blue	Central locking rear (if existing)



Numbering here, extraction after release possible (see thumbnail)



3. Storing wireless components (Excerpt from the installation manual, chapter 1.8)

Due to quality control the memory of your WiPro is empty - the wireless components have to be programmed once more:

- Plug in the 20-pin plug
- Now, hold down the button on the front of WiPro until it gives a long beep and the status LED comes on
- Now activate each wireless magnetic contact to be stored (keeping both parts away from each other until the LED lights up briefly). On the wireless remote control press one of the buttons. The wireless gas alarms must be switched on and radio cable loops must be removed from the holder.
- After each storing procedure has been successfully carried out, a short beep will sound, and the status LED will go out briefly
- To terminate Assign mode, briefly press the button on the front of WiPro again
- Attach the unit to the back of the body computer and work back the covers

*: Use silicone-gel filled scotch lock connectors (see picture 5)

Hersteller/Manufacturer

Thitronik GmbH

Finkenweg 11 – 15
D 24340 Eckernförde
Germany

www.thitronik.de

kontakt@thitronik.de

Tel.: +49 4351 76744 112

Fax: +49 4351 76744 127



 **THITRONIK**